

Marshwood

Lettings & Property Management



South Lodge
Beaminster DT8

£2,700 pcm

A stunning 6-bedroom house with a separate studio chalet set in an acre of landscaped gardens on the outskirts of Beaminster.



South Lodge is a stunning 6-bedroom period house set in an acre of beautifully landscaped private gardens on the outskirts of Beaminster. The property benefits from large rooms providing plenty of living space and a secluded studio chalet for guest accommodation, and the attentions of a gardener are included in the rent.

Accommodation includes:

- Kitchen/breakfast room
- Snug adjacent to kitchen
- Reception room
- Utility/storage room
- 6 bedrooms
- 2 bathrooms and a shower room

Rent

£2,700 per month

Pets will be taken into consideration

Deposit

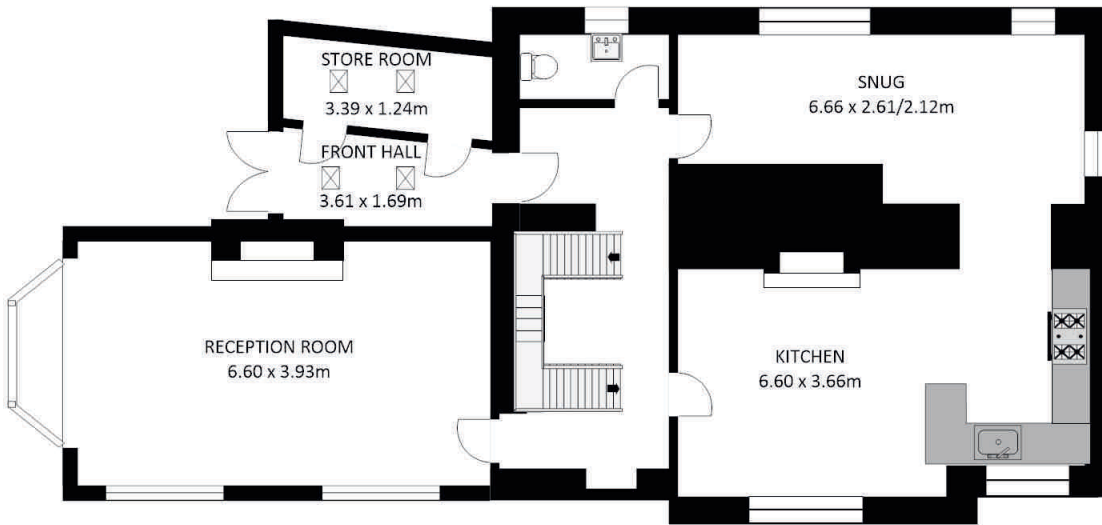
£3,115 to be held by the DPS

Energy Efficiency Rating		
	Current	Potential
<i>Very energy efficient – lower running costs</i>		
(92 plus) A		
(81-91) B		
(69-80) C		
(55-68) D		
(39-54) E		50
(21-38) F	36	
(1-20) G		
<i>Not energy efficient – higher running costs</i>		
England & Wales	EU Directive 2002/91/EC	



South Lodge, Beaminster DT8

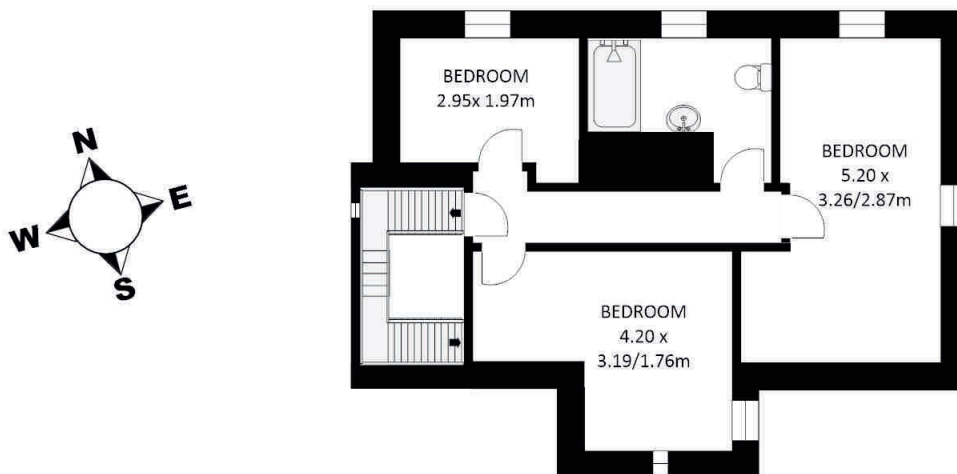
GROUND FLOOR



FIRST FLOOR



SECOND FLOOR



Whilst every care has been taken to ensure the accuracy of this floor plan, measurements of rooms, windows, doors and wall thickness are approximate and no responsibility is taken by Marshwood Lettings for any error or omission. This floor plan is for representation purposes and initial guidance only. Copyright Marshwood Lettings & Property Management 2019