

# Marshwood

Lettings & Property Management



Field Haze

Shipton Gorge, Bridport DT8

£1,200 pcm

An attractive 3-bedroom cottage located in a secluded village in close proximity to Bridport, West Bay and the attractions of the stunning Jurassic Coast.



An attractive, modern cottage on the very edge of the small Dorset village of Shipton Gorge, located approximately 3 miles from Bridport and two miles from Burton Bradstock and the world-famous Jurassic Coast. For many, its proximity and convenient back-road access to Burton Bradstock and the beaches of the Jurassic Coast will be a major draw to this location.

#### **Accommodation**

- Sitting Room; woodburner; doors onto patio
- Dining Room; door to kitchen
- Kitchen; door to small conservatory
- Small study
- WC
- Three double bedrooms
- Main Bathroom
- Ensuite Shower Room
- Double garage; access from garden
- Attractive, low-maintenance terraced garden



#### **Rent**

£1,200 per month

#### **Deposit**

£1,385 to be held by the DPS

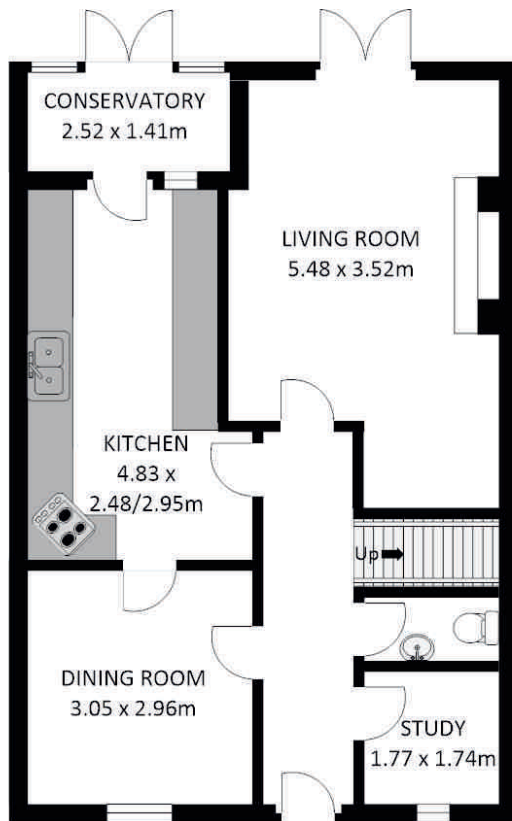
Pets taken into consideration

Available immediately

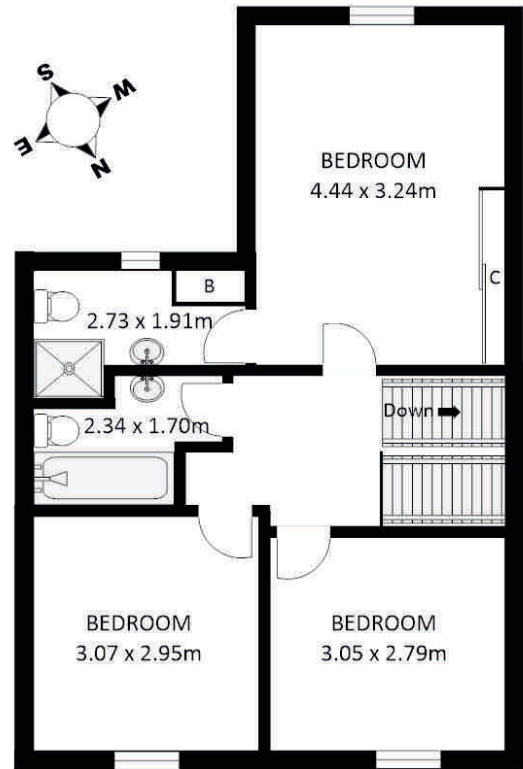


# Field Haze, Shipton Gorge, Bridport DT6

## GROUND FLOOR



## FIRST FLOOR



Whilst every care has been taken to ensure the accuracy of this floor plan, measurements of rooms, windows, doors and wall thickness are approximate and no responsibility is taken by Marshwood Lettings for any error or omission. This floor plan is for representation purposes and initial guidance only.

Copyright Marshwood Lettings & Property Management 2020