

# Marshwood

Lettings & Property Management



57 East Street  
Beaminster DT8

£725 per month

A deceptively spacious period cottage, semi-detached, with a unique ground floor layout with double doors to a pretty courtyard garden. 2 double bedrooms and a large family bathroom.





57 East Street is a deceptively spacious semi-detached cottage with two double bedrooms, a family bathroom and an attractive private courtyard garden to the rear. The property is a few minutes' walk from the centre of Beaminster which offers a variety of shops, pubs and restaurants.

### Accommodation

- Living room with woodburner
- Half wall with long, built-in tabling and recessed seating creates extra area between kitchen and living room
- Kitchen; space for under-counter dishwasher/washing machine and fridge
- Bedroom 1, double with view over garden
- Bedroom 2, double with view over street
- Bathroom; spacious area with shower over bath
- Rear garden: double doors from kitchen open onto private triangular decked area

### Rent

£725 per month

### Deposit

£836.50 to be held by the DPS

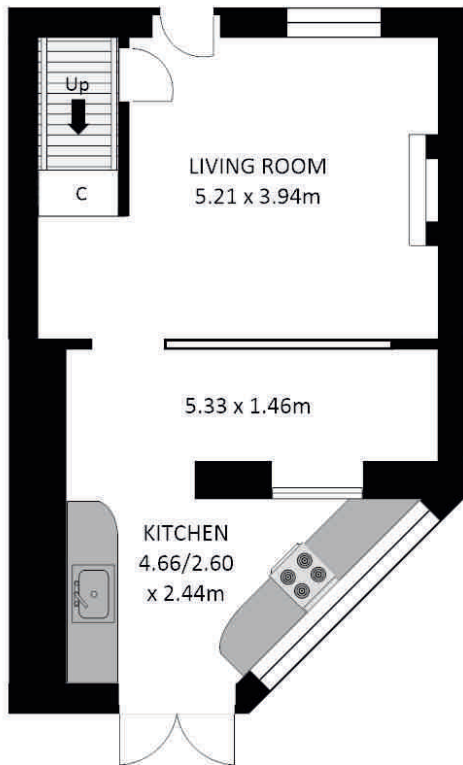
Pets taken into consideration.

Available from June 2020.

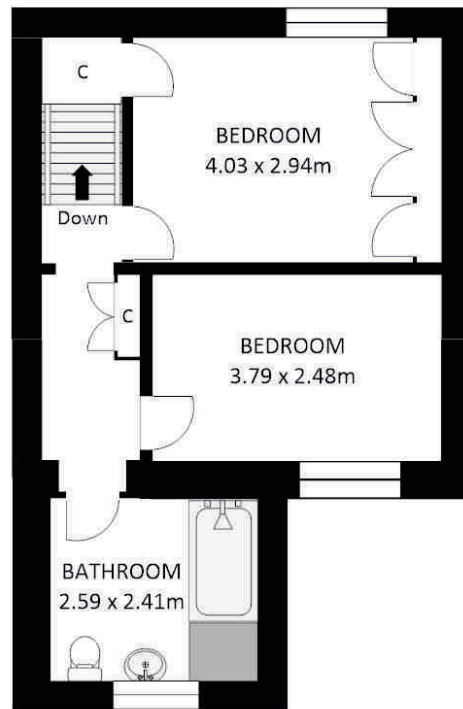


# 57 East Street, Beaminster DT8

## GROUND FLOOR



## FIRST FLOOR



Whilst every care has been taken to ensure the accuracy of this floor plan, measurements of rooms, windows, doors and wall thickness are approximate and no responsibility is taken by Marshwood Lettings for any error or omission. This floor plan is for representation purposes and initial guidance only.  
Copyright Marshwood Lettings & Property Management 2020

